

ELITE V.I.P. COMMERCIAL PRIORITY RESPONSE PROGRAM

Our Elite VIP - Emergency Response Program delivers the utmost level of disaster readiness for our business clients on a local and national level.

The response and actions taken during the first 12-48 hours following a disaster may be critical in determining whether your business fully recovers. Partnering with a proven company like Elite Restoration can mean the difference between effective operational recovery and loss of equipment, resources, and customers.



V.I.P. ELITE

JOIN OUR V.I.P DISASTER RESPONSE PROGRAM!

GET FIRST PRIORITY RESPONSE NO
MATTER HOW BAD THE DISASTER

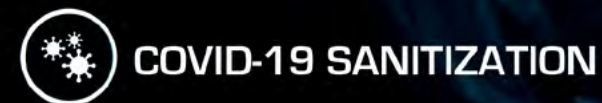
- SIGN UP AT NO EXTRA COST
- NO ANNUAL FEE
- EXCLUSIVE SET PRICING



24/7 NATIONAL EMERGENCY RESPONSE HOTLINE
844-DRY-ME-OUT (379-6368)

NEW YORK
631-567-0070

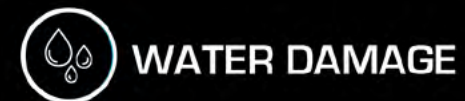
NEW ENGLAND
978-995-3126



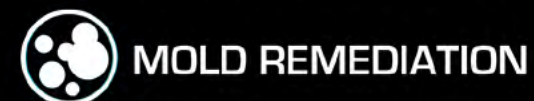
COVID-19 SANITIZATION



FIRE DAMAGE



WATER DAMAGE



MOLD REMEDIATION



INTERIOR & EXTERIOR
RENOVATION

EMERGENCY PLANNING

The Elite VIP service is structured to work with your own procedures so that when disaster strikes the Elite VIP three-stage action plan can be initiated with speed and effectiveness:

- **Stabilization** - to make sure the premises are safe and secure and to prevent further damage.
- **Assessment** - to assess the extent of damage, determine priorities and coordinate an action plan.
- **Mitigation and Restoration** - structured recovery process to restore your facility, equipment, and your business to full operational readiness.

Before a disaster strikes, we do a thorough survey of your critical systems, facilities, and vital records. We can often recommend practical, proven steps to prevent or solve potential problems before they become reality.

One call to our 24-hour hotline operated by our very own Call Center in the U.S. activates Elite VIP. Your Elite account representative will be notified immediately and Elite Restoration will send an experienced team directly to your site within four hours in most cases.

Be Prepared
For Emergencies

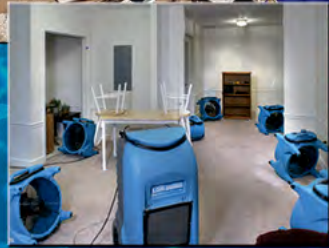
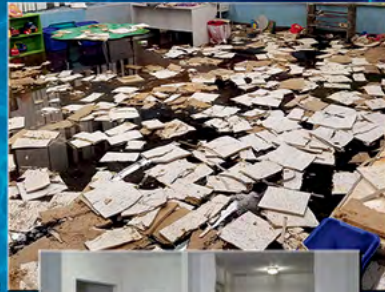


WATER DAMAGE

WE HANDLE WATER DAMAGE FROM:

Rain, hurricanes, floods and other weather events, broken water lines, results of major fire extinguishing efforts & frozen pipes.

Emergency flood water damage restoration requires skilled time management, experience and knowledge. Our team is trained and certified to the highest standards in the industry, and will respond immediately to keep you and your belongings safe. Our state of the art equipment and restorative products, coupled with our dedication team of restoration experts will dry, deodorize and disinfect flooded areas to reserve all damage and get your life back on track. Elite works around the clock to restore your home and/or business peace of mind.



COMMERCIAL CLIENTS



INDUSTRIAL • EDUCATION • SENIOR LIVING • DAYCARE'S
 VETERINARY CLINICS • MEDICAL OFFICES
 MANUFACTURING FACILITIES • WAREHOUSES • OFFICES
 RETAIL • RESTAURANTS • BARS • GYMS
 MULTI FAMILIES • APARTMENT HOMES
 MUNICIPALITIES • MALLS • BOWLING ALLEYS
 GOLF COURSES • PLACES OF WORSHIP • ENTERTAINMENT
 OFFICE PARKS • PRIVATE CLUBS • STADIUMS

CLEANING & DISINFECTING

DIFFERENT METHODS

- Fogger
- Electrostatic Spraying
- Backpack pump & Electric Spraying
- Spray Bottle & Hand Wiping

These commercial disinfection services are used in hospitals, schools, daycares, veterinary clinics, medical offices, manufacturing facilities, warehouses, offices, retail, restaurants and bars, gyms, and other businesses. Professional disinfecting services are ideal for high-traffic businesses, or those who provide services to sensitive populations like clinics, and hospitals. Avoid the spread of the coronavirus, colds and flus, viruses, fungus, and bacteria all year long and inquire today about one-time special or recurring commercial disinfecting services.



RESTORATION SERVICES

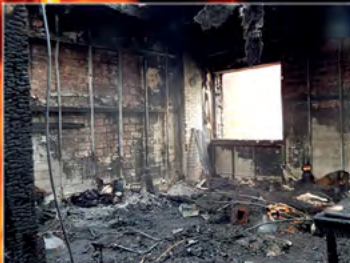
- | | |
|-------------------------------|----------------------------------|
| Air Quality Evaluation | Debris Removal |
| Area Rug Cleaning | Demolition |
| Art Restoration | Desiccants |
| Asbestos Abatement | Document Drying Restoration |
| Building Shoring | Dry-Ice Restoration |
| Biohazard Clean Up | Contents Pack Out |
| Contents Restoration | Odor Control Ozone Deodorization |
| Electronic Restoration | Plumbing |
| Emergency Board-up/Tarp | Post Construction Clean Up |
| Emergency Service 24/7/365 | Regional CAT Response |
| Equipment Rental | Sand Blasting |
| Fire Damage Mitigation | Sewage Clean Up |
| Fire Damage Restoration | Sheetrock and Texture |
| Hazardous Material Clean Up | Smoke Damage Cleaning |
| Hazardous Material Removal | Soda Blasting |
| HVAC | Specialty Electronics |
| Industrial Hygienist | Structural Cleaning |
| Infrared Leak Detection | Supplemental Heat |
| Large Loss Commercial >\$500K | Temp Power Larger than 5KW |
| Leak Detection | Temp Roofing Services |
| Lead Abatement | Textile Cleaning/Restoration |
| Mold Remediation | Water Damage Mitigation |
| National CAT Response | Water Damage Reconstruction |
| Contents Transportation | Wind Damage Restoration |
| Contents Evaluation | Upholstery Cleaning |
| Contents Storage | Upholstery Restoration |

FIRE DAMAGE

When the smoke clears out and the firefighters leave, it can seem like the worst is over and your home and/or business is safe from further damage, but without a professional emergency response team, acidic soot and smoke will continue to deteriorate your property.

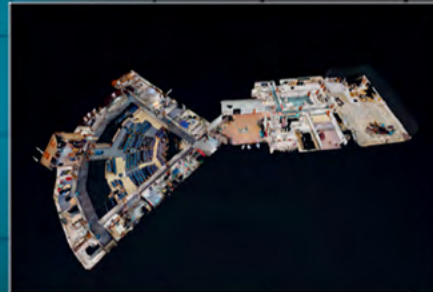


At ELITE Fire Restoration & Construction our team of dedicated fire and smoke remediation experts are equipped to handle both residential and commercial losses and get your family or business back on their feet.



VIP SERVICES OUR VIP OFFERS

- Exclusive set price list
- ERP communication tool
- Key info about your property during a disaster
- Key contacts and back up contacts
- Vendors (Who are approved to work on your property)
- Keep building components and protocols I.e. water shut off's, electrical panels, alarm protocols and how it all fits together
- 3D scans
- Minimize facility downtime
- Reduce safety hazards
- Improve building health



MOLD REMEDIATION



Mold and mildew are all around us and we are typically not a problem unless it starts growing inside a dwelling. It is usually caused by excess moisture and poor ventilation or a previous water remediation that was not done properly. If left untreated, the bacteria will start affecting indoor air quality and potentially pose various health hazards.

